

Impaired Driving

Know the facts

According to the National Highway Traffic Safety Administration (NHTSA), a driver is considered alcohol-impaired if the driver or motorcycle operator exhibits a blood alcohol concentration (BAC) of .08 grams per deciliter or greater. (Source: NHTSA, DOT HS 811 155)

Harris County, Texas

- In Harris County, in 2008, there were 354 traffic fatalities, of which 161 (46 percent) were alcohol-impaired fatalities. (Source: NHTSA and FARS)
- Harris County is one of the most populated counties in the United States. However, it also has more impaired driving fatalities per capita than any other county. It has led the nation in driving while intoxicated (DWI) deaths for the last five years. (Source: MADD)

Texas

- In Texas in 2008, there were a total of 3,382 traffic fatalities, of which 1,269 (38 percent) were alcohol-impaired fatalities. (Source: NHTSA, DOT HS 811 172)
- In 2008, more alcohol crashes were reported in the hour between 2:00 am and 2:59 am than any other hour of the day. Also, more alcohol-related crashes occurred on Saturday than any other day of the week. (Source: TxDOT)

United States

- In 2008, 11,773 people were killed in alcohol-impaired-driving crashes. This represents 32 percent of all traffic fatalities. (Source: NHTSA, DOT HS 811 155)
- The 11,773 alcohol-impaired driving fatalities in 2008 represent an average of one alcohol-impaired-driving fatality every 45 minutes. (Source: NHTSA, DOT HS 811 155)
- The number of impaired driving crashes in 2008 was highest for drivers ages 21 to 24 (34 percent), followed by ages 25 to 34 (31 percent) and 35 to 44 (25 percent). (Source: NHTSA, DOT HS 811 155)
- Impaired drivers involved in fatal crashes were eight times more likely to have a prior driving while impaired conviction. (Source: NHTSA, DOT HS 811 155)
- In 2008, seven out of ten alcohol-impaired drivers in fatal crashes had a BAC of .15 or higher. (Source: The Century Council)

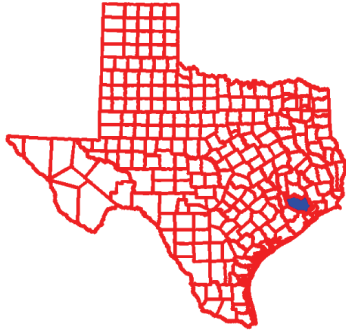
Don't tolerate impaired driving. Report it.

www.reportimpaireddrivers.com

REPORT

IMPAIRED DRIVERS

CALL 9-1-1



Know the facts



Save a Life™
Texas Department of Transportation

Impaired Driving

Traffic Fatalities in Harris County, Texas



Figure 1: Total traffic fatalities in Harris County versus alcohol impaired traffic fatalities (crashes involving at least one driver with a BAC of .08 or higher).

Traffic Fatalities in Texas

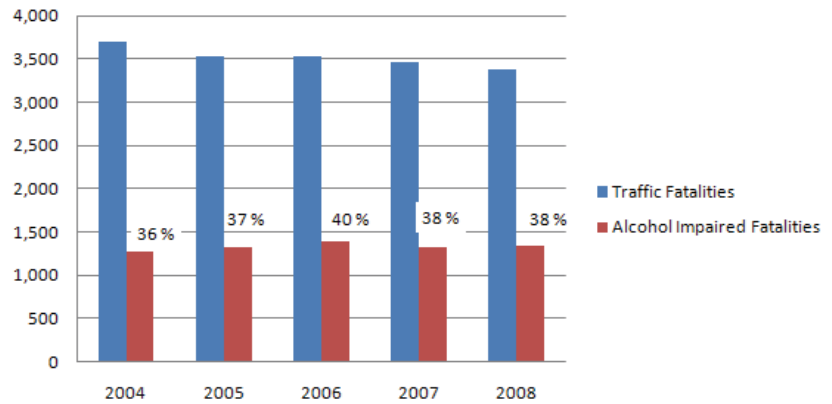


Figure 2: Total traffic fatalities in Texas versus alcohol impaired traffic fatalities (crashes involving at least one driver with a BAC of .08 or higher.)

Traffic Fatalities in the U.S.

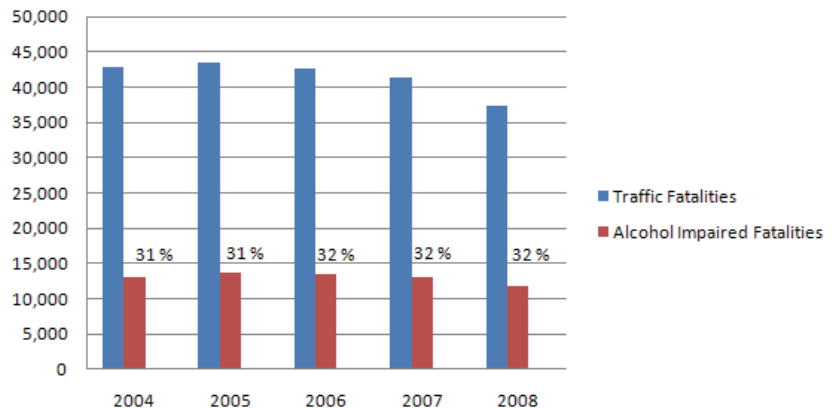


Figure 3: Total traffic fatalities in the U.S. versus alcohol impaired fatalities (crashes involving at least one driver with a BAC of .08 or higher).