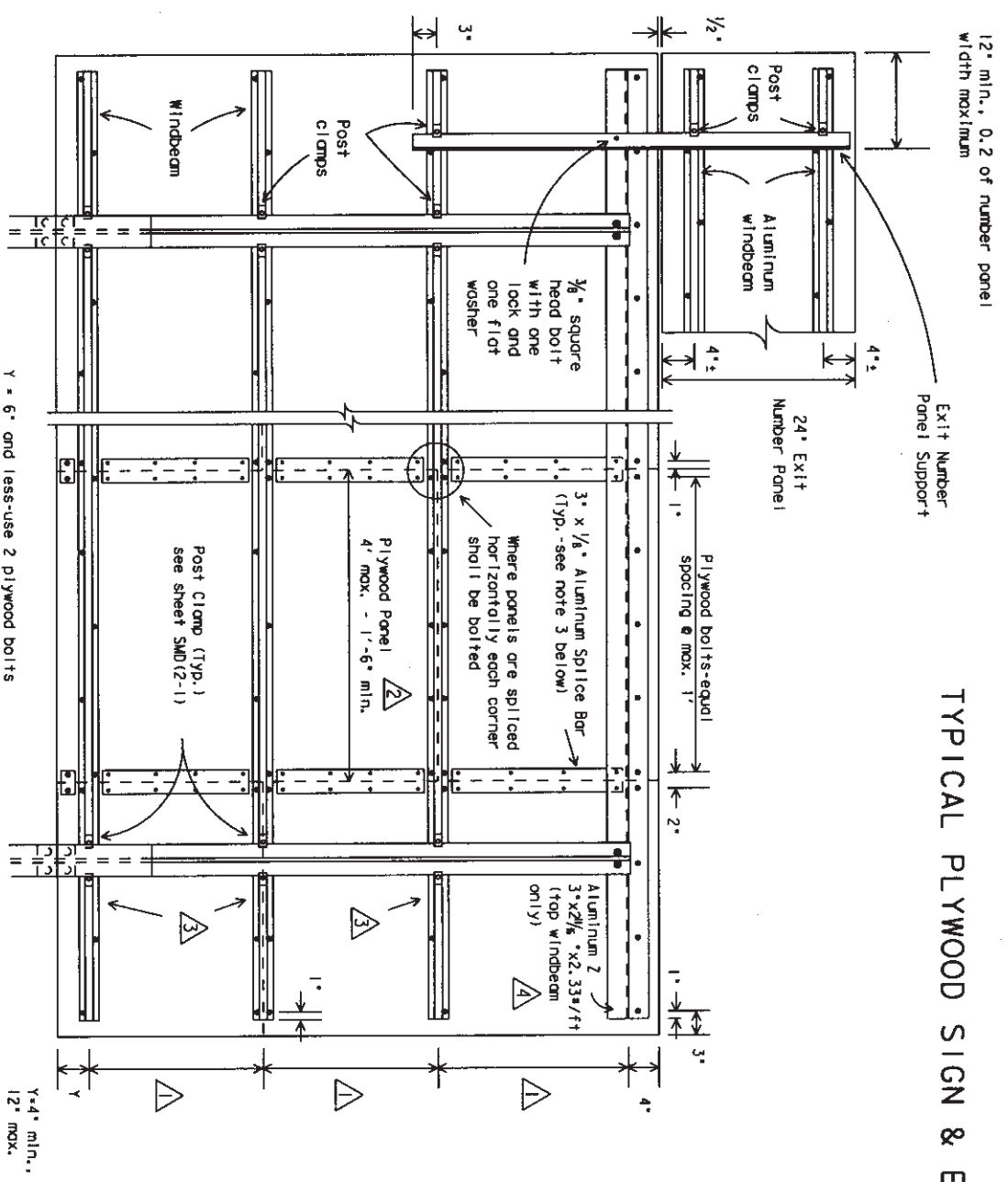
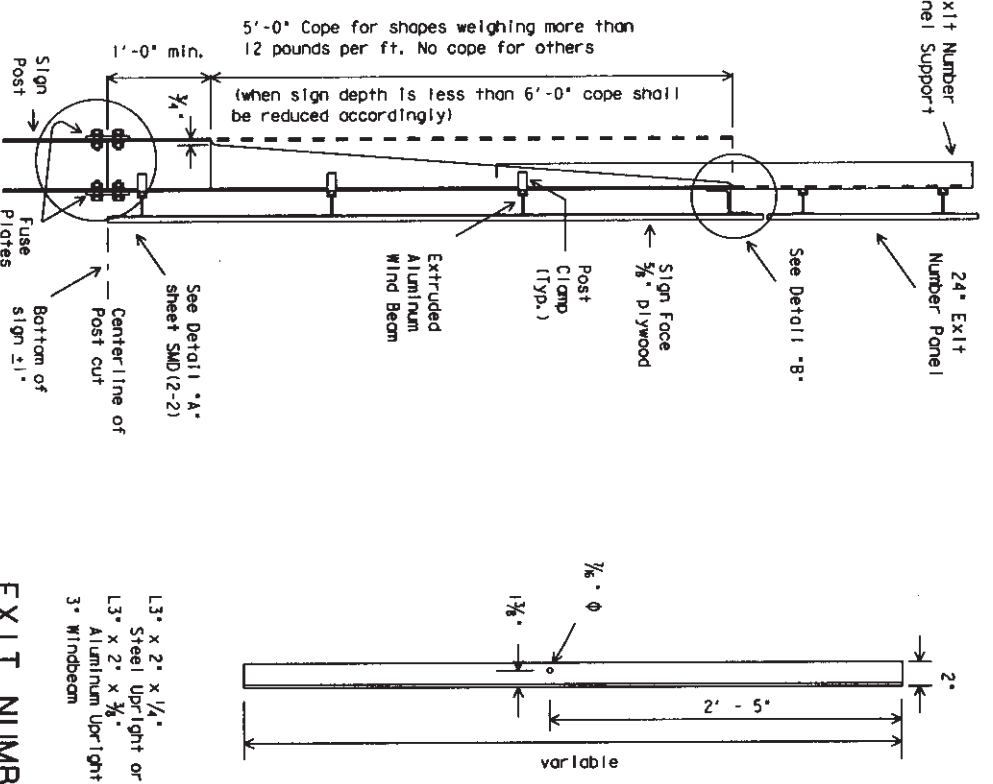


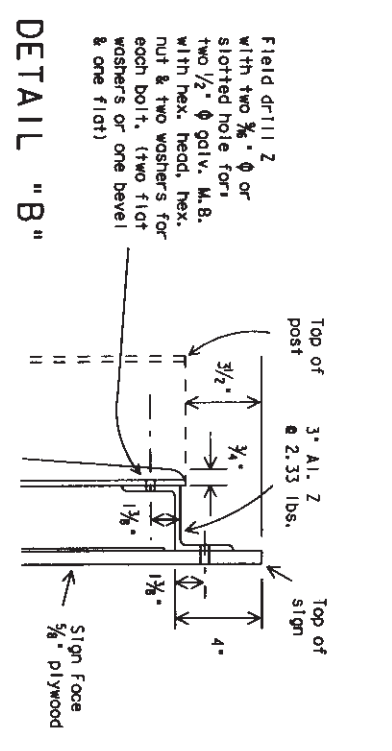
TYPICAL PLYWOOD SIGN & EXIT PANEL ASSEMBLY DETAILS



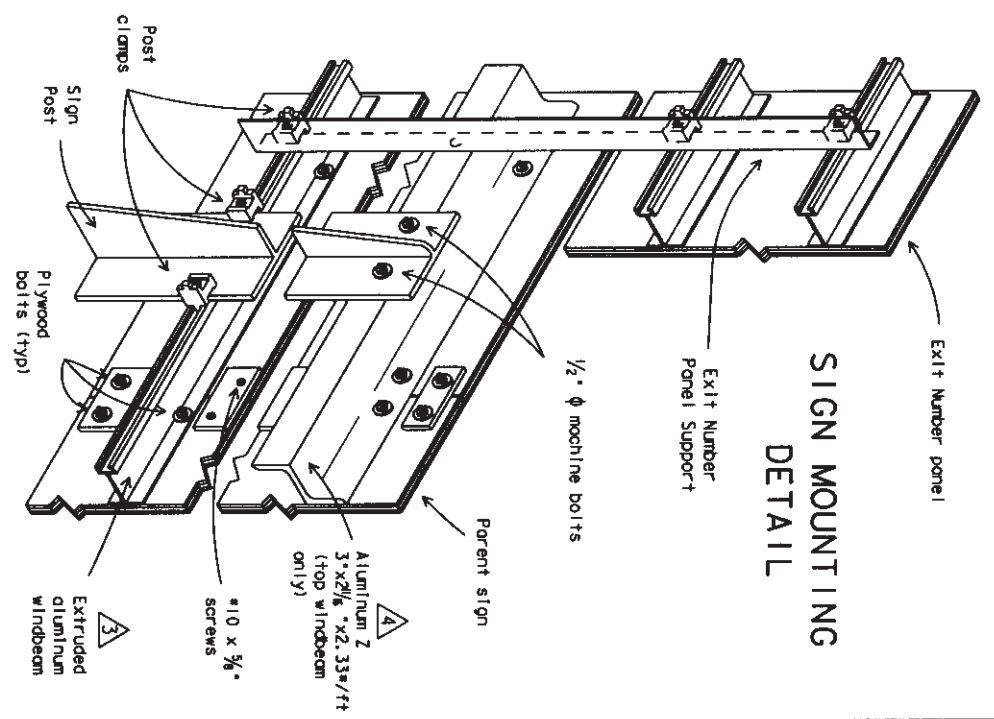
NOTES:
 1. A tolerance of plus or minus 1/16 inch will be permitted in the plan dimensions for fabrication of each single increment sign panel when necessary for squaring. A tolerance of plus or minus 1/16 inch will be permitted for each increment of a multi-increment sign panel where necessary to secure square, tight-fitting joints.
 2. Plywood bolts shall be 3/8" x 1/2" elevator type steel with flat or slightly hemispherical head and 3/4" minimum thread length. The head shall have a minimum diameter of 1/4" and a minimum of two fins on the underside. Each bolt shall be provided with one 3/8" steel hex nut, one 3/8" steel flat washer, and one 3/8" steel lock washer. Bolts, nuts and washers shall be galvanized in accordance with ASTM Designation B695, Class 50, or A153 Class C or D.
 3. Splice bars shall be secured with 3/8" long x #10 round head, stainless steel wood screws spaced at 6" maximum along double row spacing with the exception at extreme ends of splice bars, along outside edge of sign, where plywood bolts shall be used as shown. A maximum of one horizontal joint per vertical section will be permitted using a 1/8" gap between panels.
 4. Splices shall be kept to a minimum. Panels 4'x8' or larger shall be used to the maximum extent possible in the fabrication of any sign. Signs or sign sections which cannot be fabricated from at least a 4'x8' panel shall be of one piece construction.



REAR VIEW
 SIDE VIEW



DETAIL "B"



NOTES:
 1. Exit number panel shall be mounted to the right hand side of the parent sign for right exits and to the left for left hand exits. The number panel shall be mounted with two uprights so its right edge is even with the right edge of the parent sign or vice-verso for left hand exits.
 2. Exit number panel support shall be symmetrical about number panel centerline.
 3. Exit number panel support shall be of ASTM A36 structural steel galvanized after fabrication, or ASTM B221 aluminum alloy 6061-T6.
 4. All bolts, nuts and washers shall be galvanized per ASTM Designation, B695 Class 50, or A153 Class C or D.
 5. When splice bars are required to fabricate the number panel, the splice bar detail as shown for the parent sign is to be used. Splice bars on number panel need not align with those on parent sign.
 6. Posts, parent sign panels and exit number panels shall comply with notes on sheets SMD(2-1) and SMD(2-2).
 7. Signs (such as exit number panels) attached above a parent sign shall be made of the same type material as the parent sign.
 8. Exit number panel support and other connection hardware required to fasten exit number panel to parent sign shall be satisfactory to the sign blank.

STANDARD PLANS
 TEXAS DEPARTMENT OF TRANSPORTATION
 Traffic Operations Division
 SIGN MOUNTING DETAILS-
 LARGE ROADSIDE SIGNS,
 PLYWOOD
 SMD(2-3) - 95

DATE	REV.	BY	CHK.	DESCRIPTION
AUGUST 1995	1	LR	DN	ISSUED FOR CONSTRUCTION
	2			
	3			
	4			
	5			
	6			