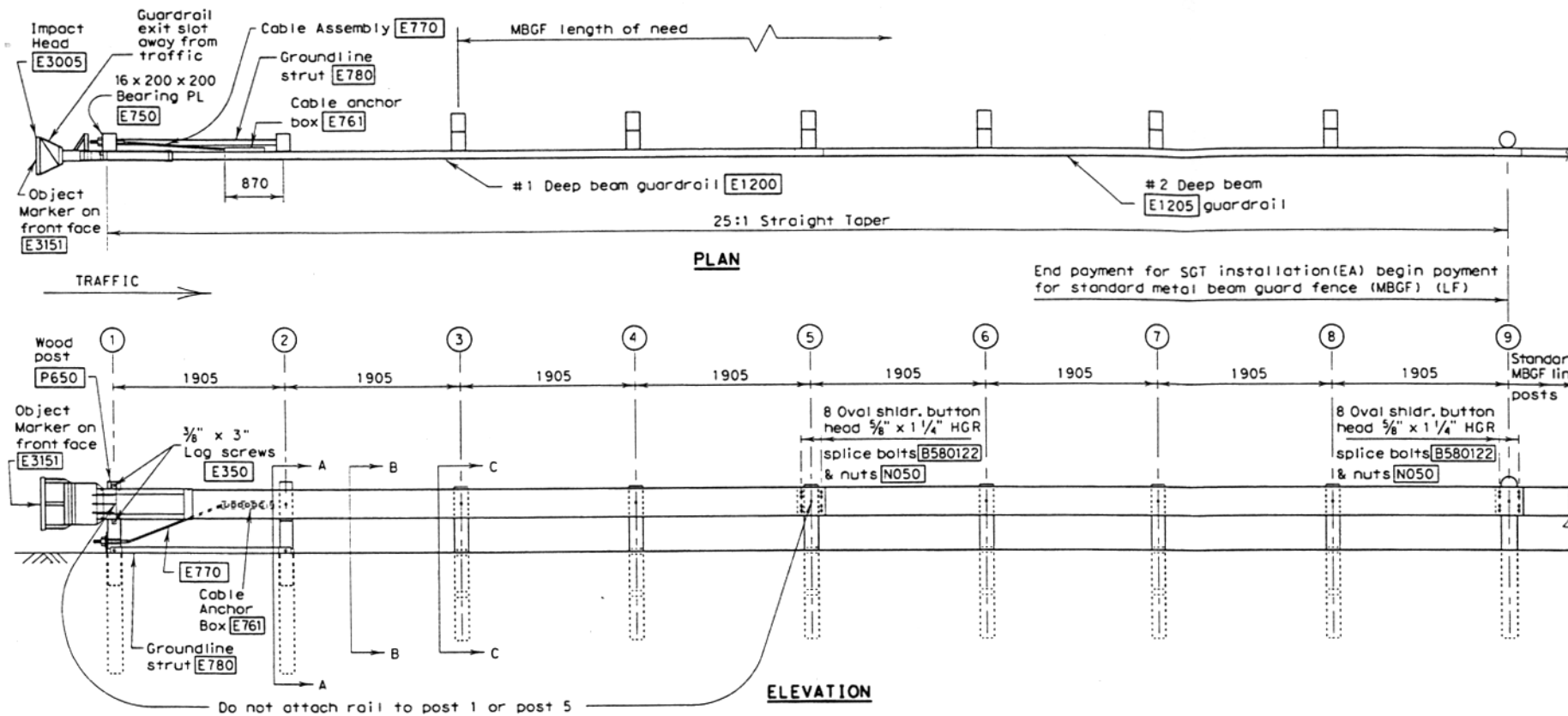
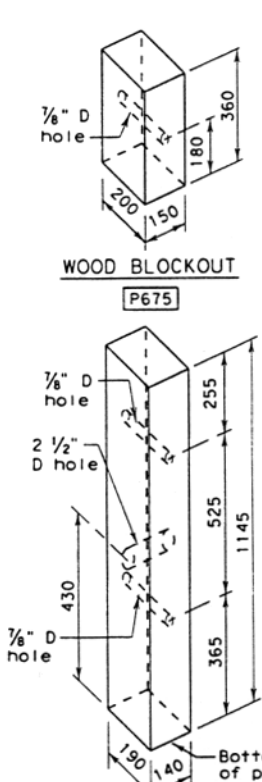
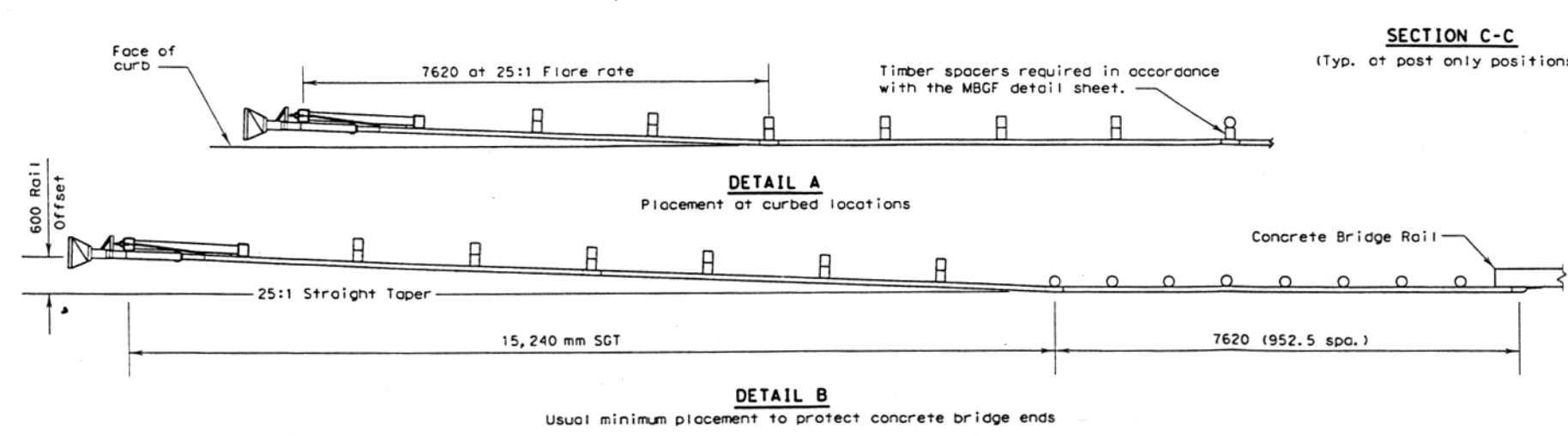
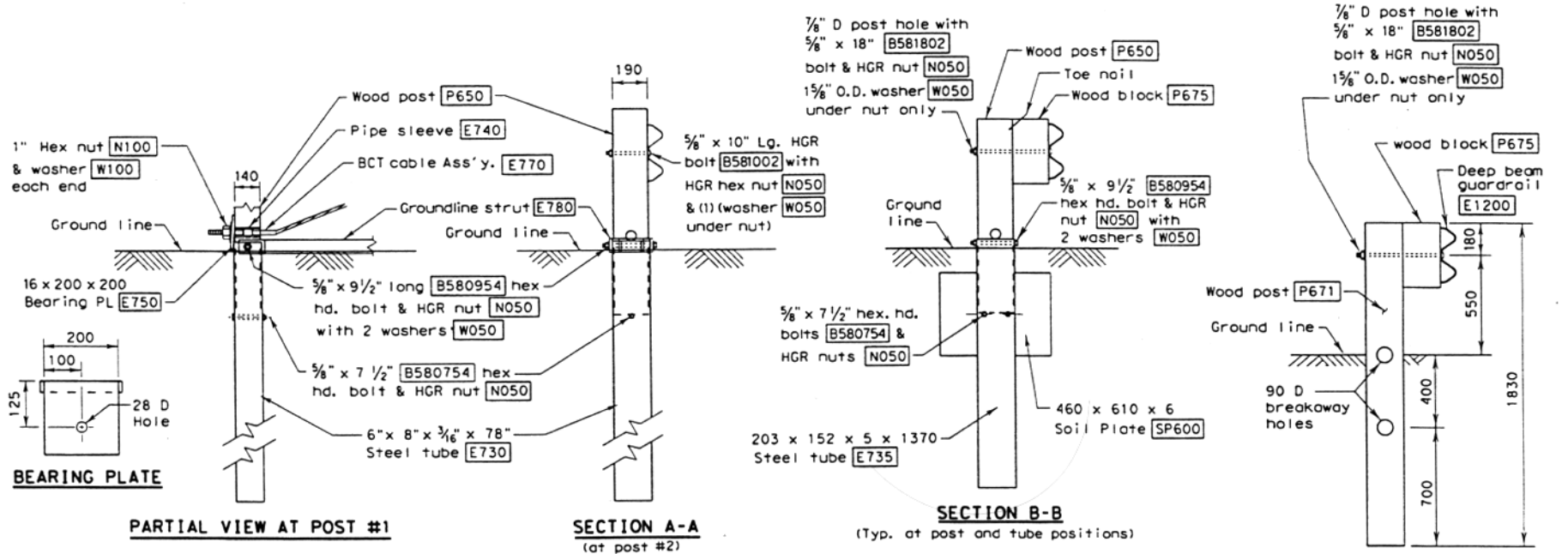


DISCLAIMER: The use of this standard is governed by the "Texas Engineering Practice Act". No warranty of any kind is made by TxDOT for any purpose whatsoever. TxDOT assumes no responsibility for the conversion of this standard to other formats or for incorrect results or damages resulting from its use.



- ### GENERAL NOTES
- The type of SGT unit will be specified elsewhere in the plans. (Numbers in circles indicate post position.)

	Post & Tube	Post Only
Type I	Posts ① thru ②	Posts ③ thru ⑧
Type II	Posts ① thru ④	Posts ⑤ thru ⑧
Type III	Posts ① thru ⑧	None
 - Wood posts are required with this guardrail end treatment.
 - All bolts, nuts cable assemblies, cable anchors, steel tubes & bearing plates shall be galvanized.
 - For non-curb installations, the MGBF will be flared at a rate of 25:1 over the first 15240 mm of the system to prevent the terminal head from encroaching on the shoulder. The flare may be decreased or eliminated for specific installations if directed by the Engineer. A 25:1 flare rate will be used at curb sections, beginning at post number 5 and ending at post number one.
 - The steel tubes shall not protrude more than 100 mm above ground. Site grading may be necessary to meet this requirement.
 - The steel tubes may be driven with an approved driving head. They shall not be driven with the wood post in the tube. If the steel tubes are placed in drilled holes, the backfill material must be satisfactorily compacted to prevent tube settlement.
 - When rock excavation is encountered, a 305 mm diameter post hole, 510 mm deep may be used if approved by the Engineer. Granular material will be placed in the bottom of the hole approximately 65 mm deep to provide drainage. The steel tube sleeves will be field cut to 510 mm in length, placed in the hole and backfilled with adequately compacted material excavated from the hole.
 - The breakaway cable assembly must be taut. A locking device, (vice grips or channel lock pliers) should be used to prevent the cable from twisting when tightening the nuts.
 - The wood blockouts shall be "toe nailed" to the rectangular wood posts to prevent them from turning when the wood shrinks.
 - For curb installations, the soil tubes and posts shall be installed at the proper ground elevation behind the curb. The posts will then require field drilling new holes to accommodate the rail to post connection bolt to maintain the proper height of the rail above the gutter pan. The excess post length above the rail will be removed if directed by the Engineer.
 - An object marker shall be installed on the front of the impact head as detailed on D&M(VIA).
 - A special site evaluation should be considered, prior to using this end treatment where there is less than 7620 mm between the outlet side of the end treatment and any adjacent driving lane.



BILL OF MATERIAL

Code #	Type I Qty.	Type II Qty.	Type III Qty.	DESCRIPTION
E1200	1	1	1	#1 Deep Beam Guardrail (8090 mm)(12 Ga.)
E1205	1	1	1	#2 Deep Beam Guardrail (7938 mm)(12 Ga.)
E730	2	2	2	Steel Tube - 203 x 152 x 5 x 1980
E735	0	2	6	Steel Tube - 203 x 152 x 5 x 1370
SP600	0	2	6	Soil Plate - 460 x 610 x 6
P650	2	4	8	Wood Posts - 140 x 190 x 1145
P671	6	4	0	Wood CRT Posts - 150 x 200 x 1830
P675	6	6	6	Wood Blockouts - 150 x 200 x 360
E740	1	1	1	Pipe Sleeve - 50 mm Std. Pipe x 140 mm
E750	1	1	1	Bearing Plate - 16 x 200 x 200
E761	1	1	1	Cable Anchor Box
E770	1	1	1	Cable Assembly
E780	1	1	1	Groundline Strut
E3005	1	1	1	Impact Head

HARDWARE

B580754	2	6	14	5/8" x 7 1/2" Hex Hd. Bolt
B580954	2	4	8	5/8" x 9 1/2" Hex Hd. Bolt (Top of Tubes)
W050	11	15	23	3/8" Washers
B581002	1	1	1	5/8" x 10" HGR Post Bolt (Post 2)
B580122	16	16	16	5/8" x 1 1/4" HGR Splice Bolt
B581802	6	6	6	5/8" x 18" HGR Post Bolt (Posts ③ thru ⑧)
N050	27	33	45	5/8" HGR Nut (16-Spl, 7-Posts, 2-Strut, 2 ea. at Tube ③ thru ⑧)
E350	2	2	2	3/8" x 3" Lag Screw
N100	2	2	2	1" Hex Nut (Anchor Cable)
W100	2	2	2	1" Washer (Anchor Cable)
E3151	1	1	1	Object Marker - (450 x 450)

Type I - post ① thru ②
 Type II - post ① thru ④
 Type III - post ① thru ⑧
 All measurements should be taken from bottom of posts.

Texas Department of Transportation
 Design Division (Roadway)
SINGLE GUARDRAIL TERMINAL
 (BEST 350)
SGT (5) - 97 (M)

FILE: SGT597M.dgn	DN: MAM	CK: MAM	DN: BR	CK: MAM	NEG:
©TxDOT FEBRUARY 1997	DIST	FED REC	FEDERAL AID PROJECT	SHEET	
REVISIONS					
COUNTY		CONTROL SECT		JOB HIGHWAY	

R = Radius
 D = Diameter
 All unit-less dimensions are millimeters