

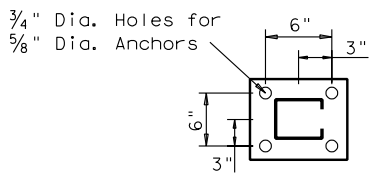
**ELEVATION VIEW**



**PLAN VIEW**

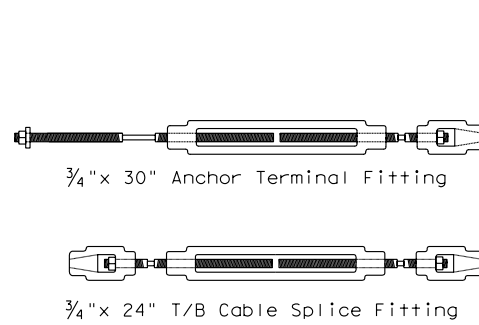
**GENERAL NOTES**

- For additional information, contact Gibraltar, Inc. at 1-800-495-8957.
- All concrete shall be class A.
- All posts shall be socketed unless otherwise specified.
- For additional information: See the manufacturer's product manual.
- For payment see special specification "Cable Barrier System".
- The GCBS system is designed for bi-directional traffic flows. See the manufacturer's product manual for placement adjacent to guardrail end treatments.
- GCBS shall be installed on median shoulders or in depressed medians with slopes of 6:1 or flatter without obstructions, depressions, etc. that may significantly affect the stability of an errant vehicle.
- GCBS may be installed on either side of the median.
- See the Texas MUTCD for proper "Barrier" delineation.
- Rock Clause: Where solid rock is encountered.
  - For socketed post, continue digging 12" dia., 15" deep into rock or the required plan depth, whichever comes first.
  - For driven post, core drill a 4" dia. hole 18" deep into rock or the required plan depth, whichever comes first.
  - For anchor post, continue digging 24" dia. hole 30" deep into rock or the required plan depth, whichever comes first.

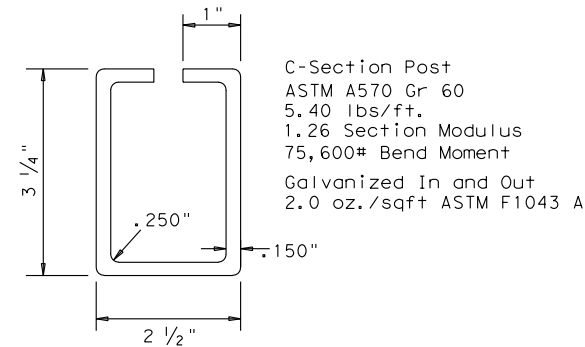


For Use On Concrete  
5/8" Mechanical Anchor  
Min. Pullout Strength 10,000 lbs.

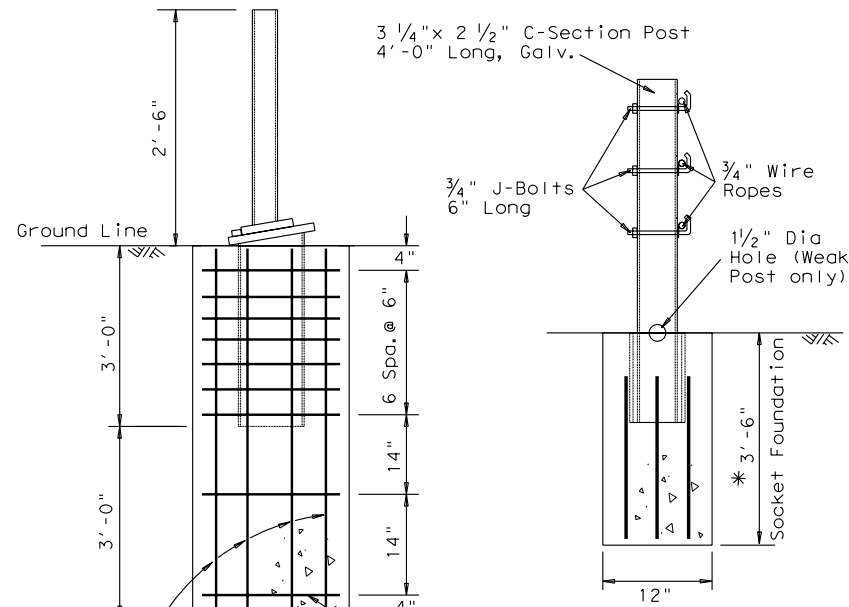
**BASE-PLATED POST**



**TURNBUCKLES**



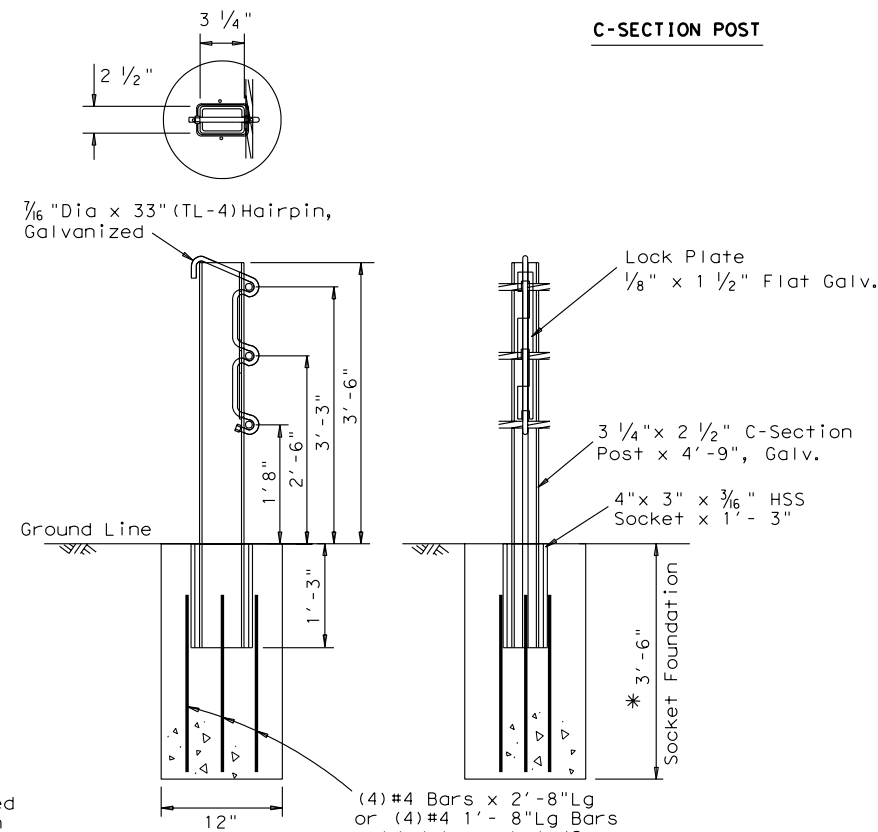
**C-SECTION POST**



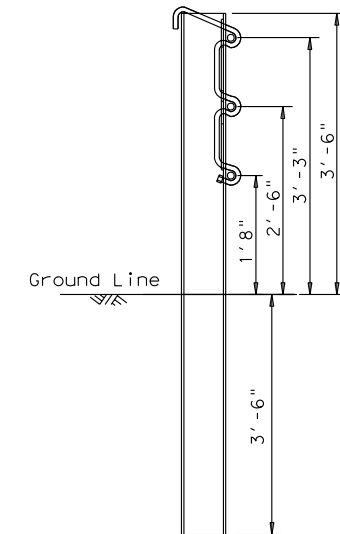
**(1) CABLE RELEASE POST**

**(2) WEAK TERMINAL POST**

\*If a Mow Strip is used the socket foundation depth may be decreased to 2'-6".



**SOCKETED LINE POST OPTION (TYPE S POST)**



**DRIVEN LINE POST OPTION (TYPE D POST)**

F	Std. Cable
-10	8800
0	8400
10	8000
20	7600
30	7200
40	6800
50	6400
60	6000
70	5600
80	5200
90	4800
100	4400
110	4000

Allowable Deviation from Chart:  
200 lbs/force.

LEVELS DISPLAYED
11
63

**GIBRALTAR (TL-4) CABLE BARRIER SYSTEM (Gibraltar Inc.)**

P. E. SEAL REQUIRED  
**PRELIMINARY**  
SUBJECT TO REVISION

FILE:	DN:	CK:	DW:	CK:
DISTRICT		FEDERAL AID PROJECT		
REVISIONS		COUNTY	CONTROL	SECT
		JOB	HIGHWAY	