
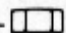

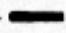
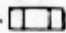
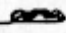
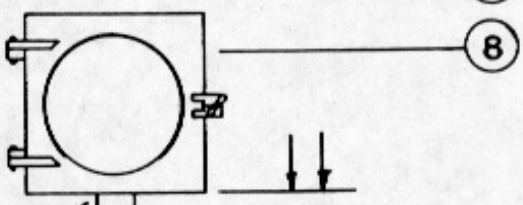
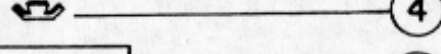
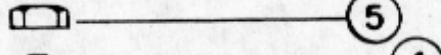
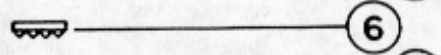
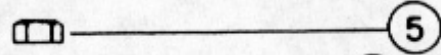
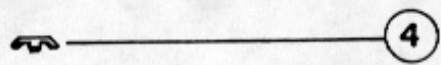
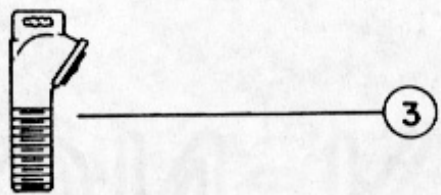
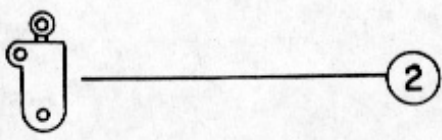
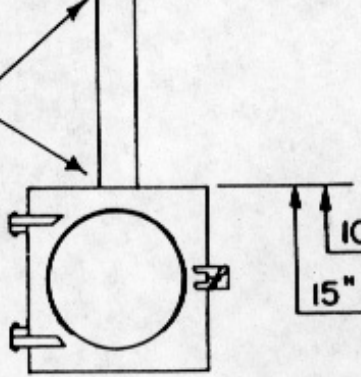


- ④ — 
 - ⑤ — 
 - ⑥ — 
 - ⑦ — 
 - ⑤ — 
 - ④ — 
- INSERT #1

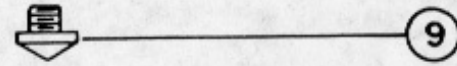
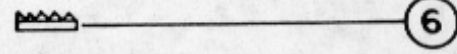
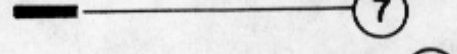
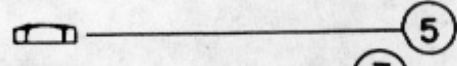


Signal head hubs, hex nuts and standard cross fittings shall have no locking or set screws and no locking or set screw holes

INSERT #1



10" FOR 8" FLASHING BEACON FACE
15" FOR 12" FLASHING BEACON FACE



One-Way, Two-Section, Vertical, Span Wire Mounted Bouncing Ball
Flashing Beacon Head

1. Span Wire Hanger, Cat. No. 610120
2. Balance Adjuster, Cat. No. 610025

Wire Outlet Assembly, Cat. No. 610130 Consisting of Following:

3. Wire Outlet
4. Lock Nut (Two Required)
5. Hex Nut (Two Required)

One-Way Two-Section Bouncing Ball Flashing Beacon Face Assembly
(8-Inch, Cat. No. 600450 or 12-Inch Cat. No. 600750) Consisting of the
Following:

6. Serrated Ring (Two Required Minimum)
7. Neoprene "O" Ring or Gasket (Two Required)
8. Bouncing Ball Flashing Beacon Face (Including Pipe Bracket
Spacer and two sets of Insert #1 for attachment of Pipe
Bracket Spacer to the two Beacon Face Sections) Assembled Complete

Pinnacle Assembly, Cat. No. 610110 Consisting of Following:

5. Hex Nut
9. Pinnacle

NOTES TO MANUFACTURER:

- A. The lock nuts and hex nuts for the Wire Outlet Assembly shall be placed on the shaft of the wire outlet by the supplier.
- B. The One-Way Two-Section Bouncing Ball Flashing Beacon Face Assembly shall be packaged in a sturdy reinforced carton. The signal face shall be delivered by the Supplier properly assembled into a complete signal face. The serrated locking rings (No. 6) and neoprene "O" rings or gaskets (No. 7) listed above shall be packaged in a separate plastic bag which is to be attached with plastic tape to the inside of the carton by the Supplier.
- C. The hex nut for the Pinnacle Assembly shall be placed on the pinnacle by the supplier.

NOTE TO DISTRICT PERSONNEL:

When ordering items for this traffic signal head by Material Request, order the following for each traffic signal head:

- a. Cat. No. 610120, One Each
- b. Cat. No. 610025, One Each
- c. Cat. No. 610130, One Each
- d. Cat. No. 600450, One Each or Cat. No. 600750, One Each
- e. Cat No. 610110, One Each