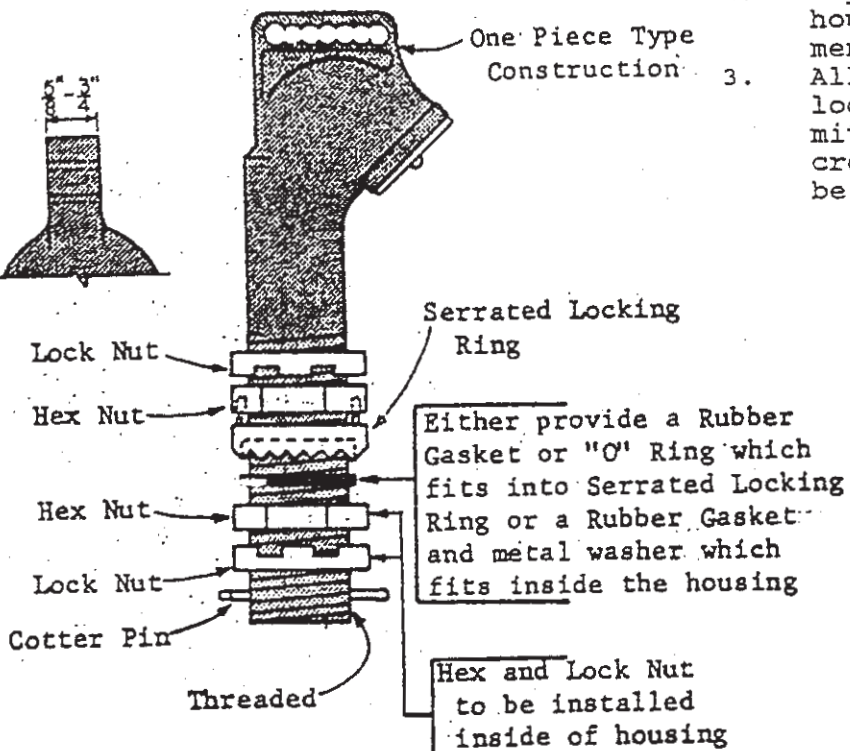
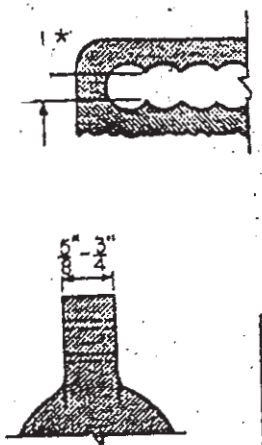


\*Designed to keep  $\frac{1}{2}$ " diameter bolt from slipping through.



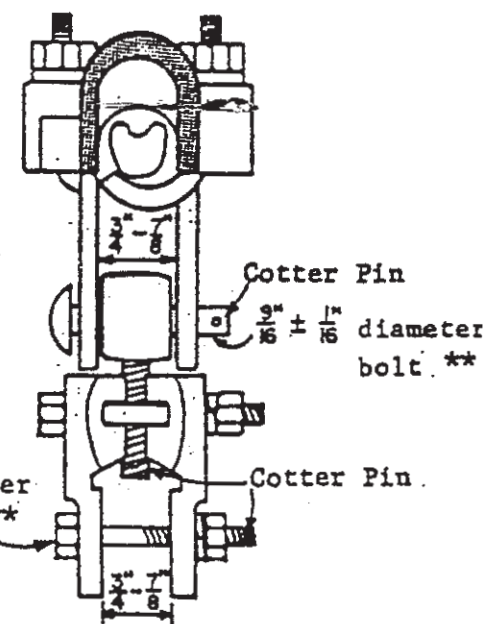
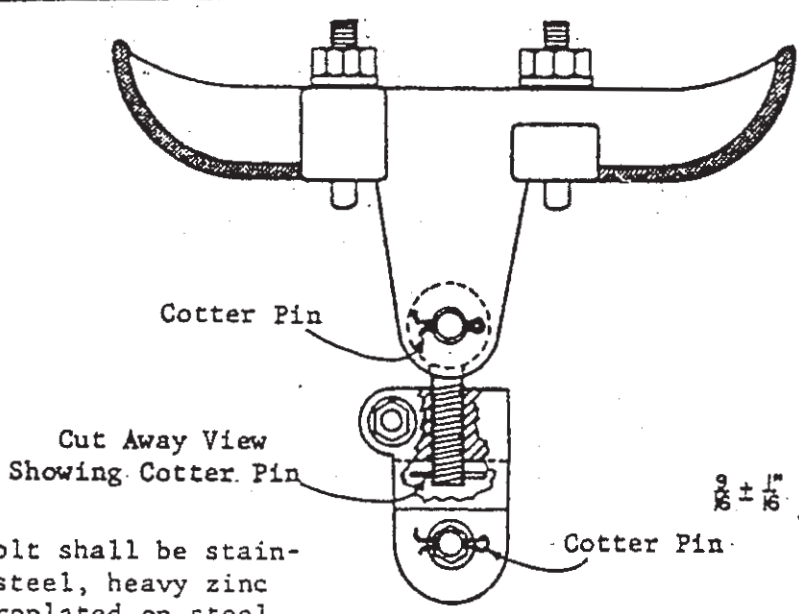
- Notes:
1. The Wire Outlet, Balance Adjuster, Hub and Span Wire Slamp is a typical design labeling specific items required. Other Wire Outlets, Balance Adjusters, Hubs, and Span Wire Clamps of similar design providing the items labeled will be acceptable.
  2. Any open end of an assembled signal housing shall be plugged with an ornamental cap and gasket.
  3. Allen Set Screws and other types of locking or set screws will not be permitted in hex nuts, signal heads hubs, and cross connection fittings; nor will holes be permitted for these screws.



Serrated Locking Ring-Detail

Wire Outlet  
for

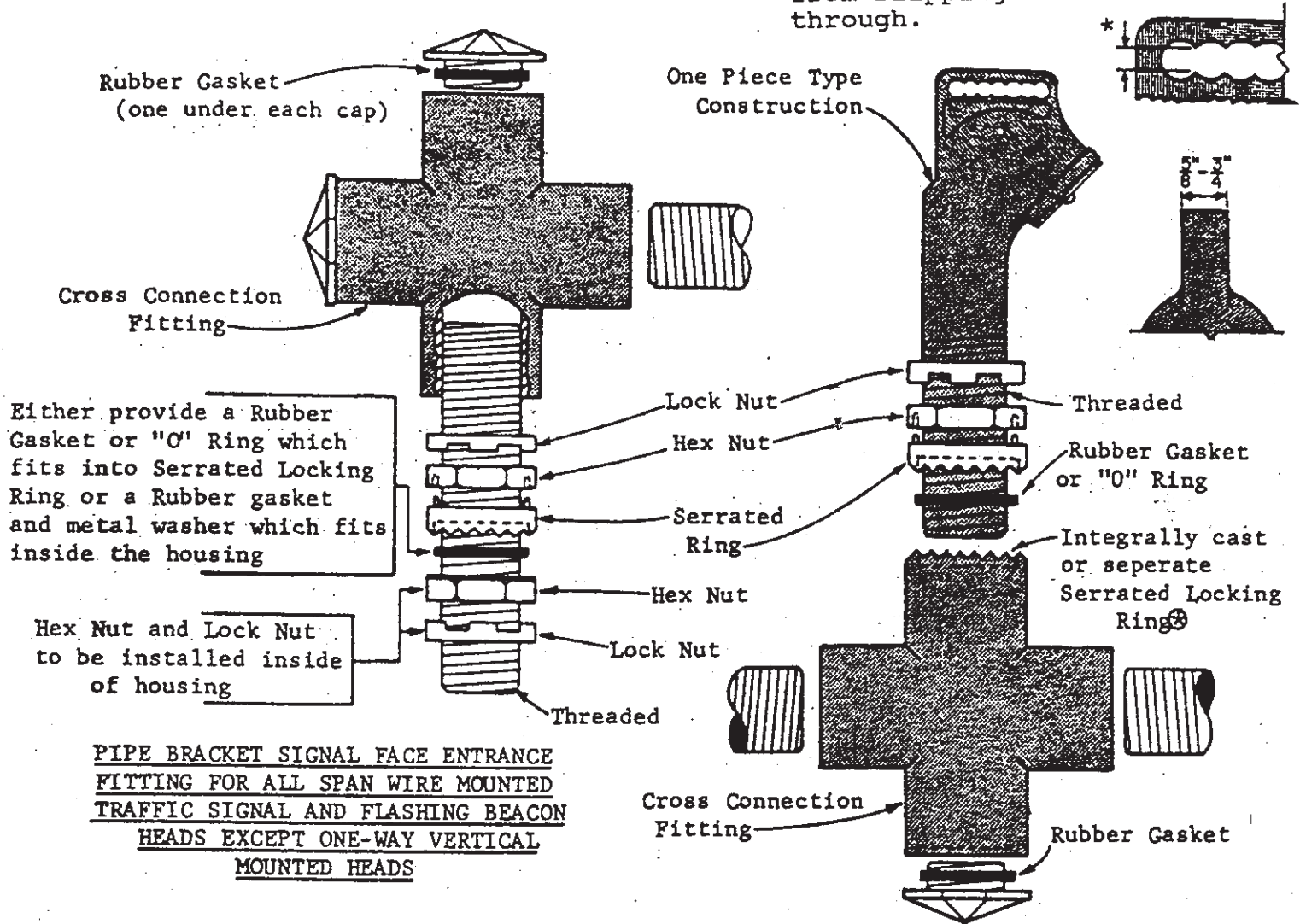
Vertical Span Wire Mounted Traffic Signal and Flashing Beacon Heads



\*\*The bolt shall be stainless steel, heavy zinc electroplated on steel Type GS of ASTM-A164, or of a metal of adequate strength that will not rust.

SPAN WIRE CLAMP and BALANCE ADJUSTER ASSEMBLY  
( for all Span Wire Mounted Traffic Signal and Flashing Beacon Heads)

\*Designed to keep 1/2" diameter bolt from slipping through.

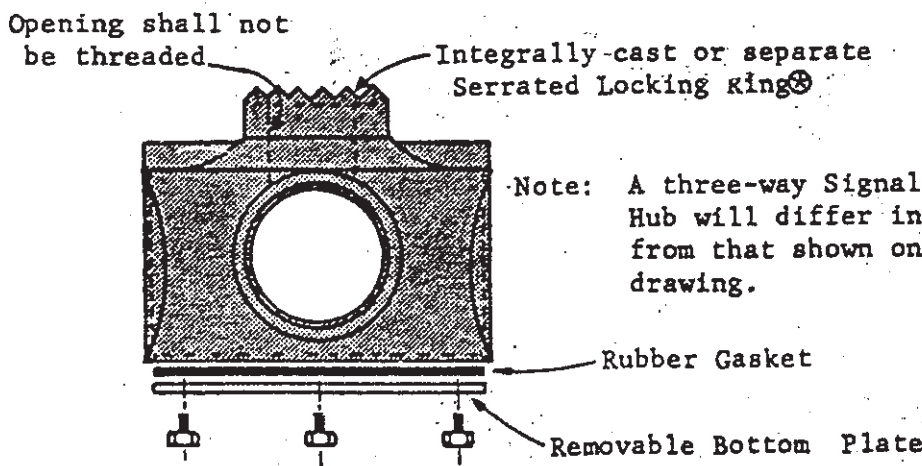


Either provide a Rubber Gasket or "O" Ring which fits into Serrated Locking Ring or a Rubber gasket and metal washer which fits inside the housing

Hex Nut and Lock Nut to be installed inside of housing

PIPE BRACKET SIGNAL FACE ENTRANCE FITTING FOR ALL SPAN WIRE MOUNTED TRAFFIC SIGNAL AND FLASHING BEACON HEADS EXCEPT ONE-WAY VERTICAL MOUNTED HEADS

WIRE OUTLET AND CROSS-CONNECTION FITTING FOR HORIZONTAL SPAN WIRE MOUNTED TRAFFIC SIGNAL AND FLASHING BEACON HEADS



SIGNAL HEAD HUB FOR TWO-WAY, THREE-WAY, AND FOUR-WAY VERTICAL SPAN WIRE MOUNTED TRAFFIC SIGNAL AND FLASHING BEACON HEADS (Except for Two-Way, Two-Section Bouncing Ball Heads)

⊗ If a separate serrated locking ring is provided, the cross-connection fitting and the signal head hub will be notched to hold the serrated ring.