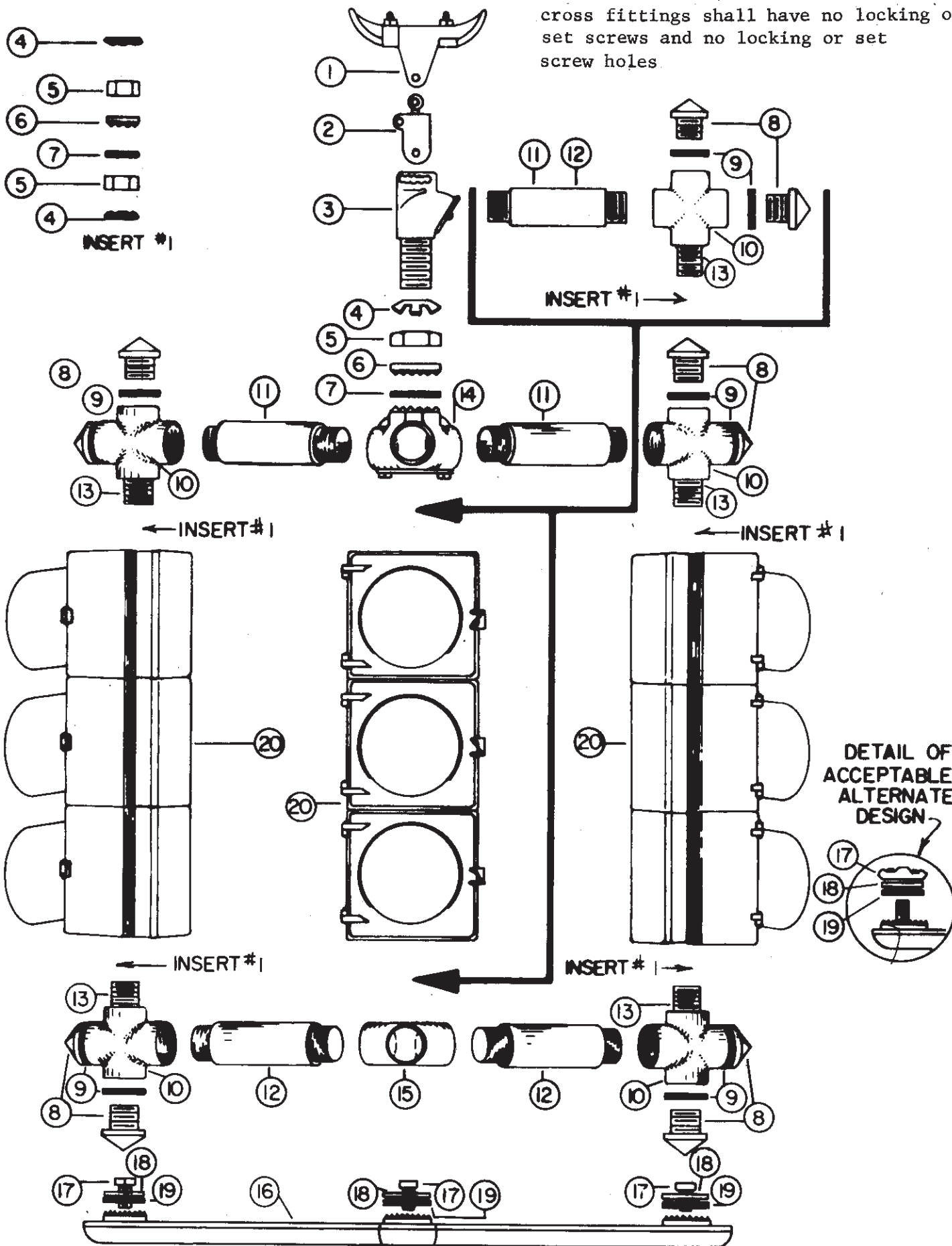


Signal head hubs, hex nuts and standard cross fittings shall have no locking or set screws and no locking or set screw holes.



ALTERNATE DESIGN FOR LOWER BRACKET ASSEMBLY WILL BE ACCEPTED PROVIDED THEY ARE STRONG ENOUGH AND MEET THE REQUIREMENTS OF THE SPECIFICATION

Three-Way, Three-Section, Span Wire Mounted Traffic Signal Head

1. Span Wire Clamp, Cat. No. 610120
2. Balance Adjuster, Cat. No. 610025

Wire Outlet Assembly, Cat. No. 610130 Consisting of Following:

3. Wire Outlet
4. Lock Nut (Two Required)
5. Hex Nut (Two Required)

\*One-Way, Three-Section Traffic Signal Face Assembly (8-Inch, Cat. No. 609210 or 12-Inch, Cat. No. 609510) Consisting of Following:

6. Serrated Ring (Two Required Minimum)
7. Neoprene "O" Ring or Gasket (Two Required)
20. Traffic Signal Face Assembled Complete

\*Upper and Lower Pipe Bracket Assemblies, Cat. No. 610150 Consisting of Following  
1½" ∅ (inside diameter) standard pipe and fittings:

4. Lock Nut (6 Required for Upper Assembly) (6 Required for Lower Assembly)
5. Hex Nut (6 Required for Upper Assembly & 6 Required for Lower Assembly)
6. Serrated Locking Ring (One Required for Upper Assembly)
7. Neoprene "O" Ring or Gasket (One Required for Upper Assembly)
8. Pinnacle (6 Required for Upper Assembly & 6 Required for Lower Assembly)
9. Neoprene Gasket (6 Required for Upper Assembly & 6 Required for Lower Assembly)
10. Standard (Threaded) Cross Fitting (3 Required for Upper Assembly & 3 Required for Lower Assembly)
11. Pipe Bracket Section F (3 Required for Upper Assembly)
12. Pipe Bracket Section G (3 Required for Lower Assembly)
13. Pipe Bracket Section H (3 Required for Upper Assembly & 3 Required for Lower Assembly)
14. Three-Way Signal Head Hub (One Required for Upper Assembly)
15. Three-Way Pipe Bracket Fitting (One Required for Lower Assembly)

\*Lower Bracket Assembly (May be Furnished at Manufacturers Option in Lieu of Lower Pipe Bracket Assembly) Consisting of Following:

16. Lower Bracket (One Required)
17. Bolt or Lock Nut (Three Required)
18. Metal Support Fitting for Use Inside of Traffic Signal Face (Three Required)
19. Neoprene Gasket for Placement Between Serrated Rings on Lower Bracket Assembly and Traffic Signal Face (Three Required)

\*NOTES TO MANUFACTURER:

- A. One Upper and One Lower Bracket Assembly shall be packaged in one sturdy reinforced carton and each assembly shall be delivered by the Supplier assembled with the exception of the serrated locking ring (No. 6) and the neoprene "O" ring or gasket (No. 7)-into a completed bracket assembly. The lock nuts (No. 4) and the hex nuts (No. 5) shall be placed on Section H pipe brackets (No. 13). The serrated locking ring (No. 6) and the neoprene "O" ring or gasket (No. 7) shall be packaged in a separate plastic bag which is to be attached to the upper pipe bracket assembly by plastic tape.
- B. Each One-Way, Three-Section Traffic Signal Face Assembly shall be packaged in a sturdy reinforced carton. The signal face shall be delivered by the Supplier properly assembled into a complete signal face. The serrated locking rings (No. 6) and neoprene "O" rings or gaskets (No. 7) listed above shall be packaged in a separate plastic bag which is to be attached with plastic tape to the inside of the carton by the Supplier.

NOTE TO DISTRICT PERSONNEL: When ordering Items by Material Request for this flashing beacon head, order the following:

- |                              |  |
|------------------------------|--|
| a. Cat. No. 610120, One Each | d. Cat. No. 609210 or Cat. No. 609510, Four Each |
| b. Cat. No. 610025, One Each | e. Cat. No. 610150, One Each                     |
| e. Cat. No. 610130, One Each |  |